

കേരള സർക്കാർ

സംഗ്രഹം

3493
5/3/19

തദ്ദേശസ്വയംഭരണ വകുപ്പ് - തദ്ദേശസ്വയംഭരണ സ്ഥാപനങ്ങളിൽ സ്ഥാപിക്കാൻ ഉദ്ദേശിക്കുന്ന മെറ്റീരിയൽ റിക്കവറി ഫസിലിറ്റിയുടെ മാതൃകാ എസ്റ്റിമേറ്റും പ്ലാനും (510Sq.ft/47.43Sq.M - എസ്റ്റിമേറ്റ് കോസ്റ്റ് 7,75,000/- രൂപ) അംഗീകരിച്ച് ഉത്തരവ് പുറപ്പെടുവിക്കുന്നു.

CE	<i>[Handwritten Signature]</i>
DCE	
AO	
AA	
S	

തദ്ദേശ സ്വയം ഭരണ (ഡി.സി) വകുപ്പ്

സ.ഉ(സാധാ)നം.306/2019/തസ്വഭവ തിരുവനന്തപുരം, തീയതി 12.02.2019

- പരാമർശം :-
- 1) തദ്ദേശ സ്വയംഭരണ വകുപ്പ് ചീഫ് എൻജിനീയറുടെ 23.11.2017-ലെ DB2/153/15/CE/LSGD നമ്പർ കത്ത്
 - 2) ഹരിത കേരളം മിഷന്റെ ഉപദാതൃമായ ശുചിത്വ-മാലിന്യ സംസ്കരണ ഉപമിഷന്റെ 25/11/2017-ൽ ചേർന്ന നാലാമത് സംസ്ഥാനതല കർമ്മ സമിതി യോഗത്തിലെ തീരുമാനം നമ്പർ 2.1.2
 - 3) ക്ലീൻ കേരള കമ്പനി മാനേജിങ് ഡയറക്ടറുടെ 14.02.2018-ലെ C33/CKCL/2017 നമ്പർ കത്ത്
 - 4) ക്ലീൻ കേരള കമ്പനി മാനേജിങ് ഡയറക്ടറുടെ 19.04.2018-ലെ A30/CKCL/2018 നമ്പർ കത്ത്

ഉത്തരവ്

തദ്ദേശസ്വയംഭരണ സ്ഥാപനങ്ങളിൽ ആവശ്യാനുസരണം മെറ്റീരിയൽ കളക്ഷൻ ഫസിലിറ്റി(എം.സി.എഫ്), റിസോഴ്സ് റിക്കവറി ഫസിലിറ്റി (ആർ.ആർ.എഫ്) എന്നിവ സ്ഥാപിക്കുന്നതിന് മാതൃകാ ഡിസൈനും എസ്റ്റിമേറ്റും തയ്യാറാക്കി ചീഫ് എൻജിനീയർ അംഗീകരിച്ച ശേഷം സർക്കാർ അംഗീകരിച്ച് ഉത്തരവായി പുറപ്പെടുവിക്കുന്നതിലേക്ക് വിശദമായ കുറിപ്പ് സഹിതം സമർപ്പിക്കുന്നതിന് ഹരിത കേരളം മിഷന്റെ ഉപദാതൃമായ ശുചിത്വ മാലിന്യ സംസ്കരണ ഉപമിഷന്റെ നാലാമത് സംസ്ഥാനതല കർമ്മസമിതി യോഗം പരാമർശം(2) പ്രകാരം ക്ലീൻ കേരള കമ്പനി മാനേജിങ് ഡയറക്ടറെ ചുമതലപ്പെടുത്തിയിരുന്നു.

DB2

2. തദ്ദേശ സ്വയംഭരണ വകുപ്പ് ചീഫ് എൻജിനീയർ, തിരുവനന്തപുരം ജില്ലയുടെ കോസ്റ്റ് ഇൻഡക്സിൽ തയ്യാറാക്കി പരാമർശം (1) പ്രകാരം സമർപ്പിച്ചിരുന്ന മെറ്റീരിയൽ റിക്കവറി ഫസിലിറ്റിയുടെ മാതൃകാ എസ്റ്റിമേറ്റും പ്ലാനും അംഗീകരിച്ച് ഉത്തരവ് പുറപ്പെടുവിക്കണമെന്ന് ക്ലീൻ കേരള കമ്പനി മാനേജിങ് ഡയറക്ടറെ പരാമർശം (3) പ്രകാരം ആവശ്യപ്പെട്ടിരുന്നു.

3. തദ്ദേശസ്വയംഭരണ സ്ഥാപനങ്ങളിൽ ശേഖരിക്കപ്പെടുന്ന അജൈവ മാലിന്യങ്ങളുടെ തരം തിരിവിനും മെഷീനറികൾ സ്ഥാപിക്കുന്നതിനും കുറഞ്ഞ ചിലവിൽ സ്ഥാപിക്കുവാൻ കഴിയുന്ന തരത്തിലാണ് മാതൃകാ പ്ലാൻ തയ്യാറാക്കിയിട്ടുള്ളതെന്നും തദ്ദേശ സ്വയംഭരണ സ്ഥാപനങ്ങൾക്ക് കാലതാമസം കൂടാതെ യൂണിറ്റുകൾ സ്ഥാപിക്കുന്നതിന് വേണ്ടിയാണ് ഇത്തരത്തിലുള്ള ഡിസൈൻ

തയാറാക്കിയിട്ടുള്ളതെന്നും ചിലവ് കുറഞ്ഞ എസ്റ്റിമേറ്റ് ആയതിനാലും ബിസിനസ് മോഡലായി പ്രവർത്തിക്കേണ്ടതിനാലും എസ്റ്റിമേറ്റ് പ്രയോഗാധികമായി സ്വീകരിക്കാവുന്നതാണ് എന്നും ക്ലീൻ കേരള കമ്പനി മാനേജിങ് ഡയറക്ടർ പരാമർശം (4) പ്രകാരം റിപ്പോർട്ട് ചെയ്തിരുന്നു.

4. സർക്കാർ ഇക്കാര്യം വിശദമായി പരിശോധിച്ചു തദ്ദേശസ്വയംഭരണ സ്ഥാപനങ്ങളിൽ സ്ഥാപിക്കാൻ ഉദ്ദേശിക്കുന്ന മെറ്റീരിയൽ റിക്കവറി ഫസിലിറ്റിയുടെ ഇതോടൊപ്പം അനുബന്ധമായി ചേർത്തിട്ടുള്ള എസ്റ്റിമേറ്റും പ്ലാനും (510Sq.ft/47.43Sq.M എസ്റ്റിമേറ്റ് കോസ്റ്റ് 7,75,000/- രൂപ) ഒരു മാതൃക എന്ന നിലയിൽ അംഗീകരിച്ച് ഉത്തരവ് പുറപ്പെടുവിക്കുന്നു. തദ്ദേശ സ്വയംഭരണ സ്ഥാപനങ്ങൾക്ക് അവരുടെ പ്രാദേശിക പ്രത്യേകതകളും ആവശ്യങ്ങളും കണക്കിലെടുത്ത് എസ്റ്റിമേറ്റിലും പ്ലാനിലും ആവശ്യമായ ഭേദഗതികൾ വരുത്താവുന്നതാണ്.

(ഗവർണ്ണറുടെ ഉത്തരവിൻപ്രകാരം)

**മിനിമോൾ ഡി
ഡെപ്യൂട്ടി സെക്രട്ടറി**

നഗരകാര്യ ഡയറക്ടർ
പഞ്ചായത്ത് ഡയറക്ടർ, തിരുവനന്തപുരം
റ്ററൽ ഡെവലപ്മെന്റ് കമ്മീഷണർ
ചീഫ് എൻജിനീയർ, തദ്ദേശ സ്വയംഭരണ വകുപ്പ്
എക്സിക്യൂട്ടീവ് വൈസ് ചെയർപേഴ്സൺ, പാരിതകേരളം മിഷൻ
മാനേജിങ് ഡയറക്ടർ ക്ലീൻ കേരള കമ്പനി ലിമിറ്റഡ്
എക്സിക്യൂട്ടീവ് ഡയറക്ടർ, ശുചിത്വ മിഷൻ, തിരുവനന്തപുരം
പ്രിൻസിപ്പൽ അക്കൗണ്ടന്റ് ജനറൽ (ആഡിറ്റ്/എ&ഇ) കേരള, തിരുവനന്തപുരം
എക്സിക്യൂട്ടീവ് ഡയറക്ടർ, ഇൻഫർമേഷൻ കേരള മിഷൻ, തിരുവനന്തപുരം
ഡയറക്ടർ, ഐ&പി.ആർ.ഡി/ വെബ് & ന്യൂ മീഡിയ, തിരുവനന്തപുരം
കരുതൽ ഫയൽ/ ഓഫീസ് കോപ്പി

ഉത്തരവിൻ പ്രകാരം

Amal
സെക്ഷൻ ഓഫീസർ

PRICE

EST NO:2017-2018/

Office of the Chief Engineer LSGD

Material Recovery Facility(510sq.ft/47.43 Sq.M)-Model Estimate

Detailed Estimate

(Cost Index Applied for this estimate is 44.12%)

Sl No	Description	No	L	B	D	CF	Quantity	Remark	
1 Civil Work									
1	2.8.1 Earth work in excavation by mechanical means (Hydraulic excavator) /manual means in foundation trenches or drains (not exceeding 1.5 m in width or 10 sqm on plan), including dressing of sides and ramming of bottoms, lift up to 1.5 m, including getting out the excavated soil and disposal of surplus excavated soil as directed, within a lead of 50 m.All kinds of soil								
	Earth work								
	Foundation around	1	28.900	0.600	0.600		10.404		
	Cross wall	1	4.500	0.600	0.600		1.620		
	Cross wall	2	1.700	0.600	0.600		1.224		
	Step	1	1.200	0.750	0.300		0.270		
	Total Quantity							13.518 cum	
	Total Deducted Quantity							0.000 cum	
	Net Total Quantity							13.518 cum	
	Say 13.518 cum @ Rs 239.82 / cum							Rs 3241.89	
2	4.1.8 Providing and laying in position cement concrete of specified grade excluding the cost of centering and shuttering - All work up to plinth level:1:4:8 (1 cement : 4 coarse sand : 8 graded stone aggregate 40 nominal size)								
	Foundation								
	Foundation around	1	28.900	0.600	0.100		1.734		
	Cross wall	1	4.500	0.600	0.100		0.270		
	Cross wall	2	1.700	0.600	0.100		0.205		
	Flooring-Main portion	1	6.220	4.900	0.075		2.286		
	Passage	1	1.200	0.600	0.075		0.054		
	Dress	1	2.100	1.500	0.075		0.237		
	Office	1	2.100	2.000	0.075		0.315		
	Toilet	1	1.500	1.200	0.075		0.135		
	Total Quantity							5.236 cum	
	Total Deducted Quantity							0.000 cum	

PRICE

EST NO:2017-2018/

		Net Total Quantity					5.236 cum
		Say 5.236 cum @ Rs 6453.91 / cum					Rs 33792.67
3	7.1.1	Random rubble masonry with hard stone in foundation and plinth including levelling up with cement concrete 1:6:12 (1 cement : 6 coarse sand : 12 graded stone aggregate 20 mm nominal size) up to plinth level with Cement mortar 1:6 (1 cement : 6 coarse sand)					
		Foundation					
	Foundation around	1	28.900	0.600	0.600		10.404
	Cross wall	1	4.500	0.600	0.600		1.620
	Cross wall	2	1.800	0.600	0.600		1.296
	Step	1	1.200	0.750	0.300		0.270
		Basement					
	Foundation around	1	28.900	0.450	0.450		5.853
	Cross wall	1	4.650	0.450	0.450		0.942
	Cross wall	2	1.850	0.450	0.450		0.750
		Total Quantity					21.135 cum
		Total Deducted Quantity					0.000 cum
		Net Total Quantity					21.135 cum
		Say 21.135 cum @ Rs 5715.58 / cum					Rs 120798.78
4	4.1.2	Providing and laying in position cement concrete of specified grade excluding the cost of centering and shuttering - All work up to plinth level:1:1/2:3 (cement : 1 1/2 coarse sand : 3 graded stone aggregate 20 mm nominal size)					
		Foundation					
	For Fixing post	8	0.450	0.450	1.050		1.702
		Total Quantity					1.702 cum
		Total Deducted Quantity					0.000 cum
		Net Total Quantity					1.702 cum
		Say 1.702 cum @ Rs 8538.61 / cum					Rs 14532.71
5	5.1.2	Providing and laying in position specified grade of reinforced cement concrete, excluding the cost of centering, shuttering, finishing and reinforcement - All work up to plinth level:1:1:5:3 (1 cement 1.5 coarse sand :3 graded stone aggregate 20 mm nominal size)					
		Plinth belt					
	Foundation around	1	28.900	0.200	0.0750		0.434

PRICE

EST NO:2017-2018/

	Cross wall	1	4.900	0.200	0.0750		0.074	
	Cross wall	2	2.100	0.200	0.0750		0.063	
	Total Quantity						0.571 cum	
	Total Deducted Quantity						0.000 cum	
	Net Total Quantity						0.571 cum	
	Say 0.571 cum @ Rs 8957.56 / cum						Rs 5114.77	
6	50.6.1.8 Solid block masonry using pre cast solid blocks (Factory made) of size 40x20x15cm or nearest available size conforming to IS 2185 part I of 1979 for super structure up to floor two level with thickness 15cm in CM 1:6 (1 cement : 6 coarse sand etc complete							
	Wall							
	Wall around	1	128.900	0.150	2.700		11.705	
	Cross wall	1	4.950	0.150	2.700		2.005	
	Cross wall	2	2.100	0.100	2.700		1.135	
	LSGD Engine Opening Wing							
	Door	1	1.000	0.200	2.100		-0.420	
	Doors	2	0.900	0.200	2.100		-0.756	
	Door	1	0.750	0.200	2.100		-0.315	
	Windows	2	1.000	0.200	1.200		-0.480	
	Grill -around	1	15.140	0.200	1.500		-4.542	
	Total Quantity						14.845 cum	
	Total Deducted Quantity						-6.513 cum	
	Net Total Quantity						8.332 cum	
	Say 8.332 cum @ Rs 5989.09 / cum						Rs 49901.10	
7	5.3 Reinforced cement concrete work in beams, suspended floors, roofs, having slope up to 15° landings, balconies, shelves, chajjas, lintels, bands, plain window sills, staircases and spiral stair cases up to floor five level excluding the cost of centering, shuttering, finishing and reinforcement, with 1:1.5:3 (1 cement : 1.5 coarse sand (Zone III) : 3 graded stone aggregate 20 mm nominal size).							
	Lintel and slab							
		1	14.800	0.200	0.150		0.445	
		2	1.500	0.100	0.150		0.046	
	Toilet slab	1	1.900	1.400	0.100		0.266	
	Total Quantity						0.757 cum	
	Total Deducted Quantity						0.000 cum	

PRICE

EST NO:2017-2018/

		Net Total Quantity					0.757 cum
		Say 0.757 cum @ Rs 10651.62 / cum					Rs 8063.28
8	5.9.3	Centering and shuttering including strutting, etc. and removal of form for:Suspended floors, roofs, landings, balconias and access platform					
		Slab					
	Slab	1	1.500	1.200		1.800	
		Total Quantity					1.800 sqm
		Total Deducted Quantity					0.000 sqm
		Net Total Quantity					1.800 sqm
		Say 1.800 sqm @ Rs 608.62 / sqm					Rs 1095.52
9	5.9.1	Centering and shuttering including strutting, etc. and removal of form for:Foundations, footings, bases of columns, etc for mass concrete					
		LCD Engine Plinth belt - 1A line					
	Foundation around	2	28.900	1.000	0.0750	4.335	
	Cross wall	2	14.900	1.000	0.0750	0.735	
	Cross wall	4	2.100	1.000	0.0750	0.630	
		Total Quantity					5.700 sqm
		Total Deducted Quantity					0.000 sqm
		Net Total Quantity					5.700 sqm
		Say 5.700 sqm @ Rs 279.52 / sqm					Rs 1593.26
10	5.9.5	Centering and shuttering including strutting, etc. and removal of form for:Lintels, beams, plinth beams, girders brassumers and cantilevers					
		Lintel					
		2	14.800	1.000	0.150	4.440	
		4	1.500	1.000	0.150	0.900	
		Total Quantity					5.340 sqm
		Total Deducted Quantity					0.000 sqm
		Net Total Quantity					5.340 sqm
		Say 5.340 sqm @ Rs 494.19 / sqm					Rs 2638.97
11	5.22.6	Steel reinforcement for R.C.C work including straightening, cutting, bending, placing in position and binding all complete upto plinth levelThermo - Mechanically Treated bars					

PRICE

EST NO:2017-2018/

	For belt	1	0.571	1.000	1.000	50.0	28.550		
	For lintel and slab	1	0.757	1.000	1.000	65.0	49.205		
	Total Quantity						77.755 kilogram		
	Total Deducted Quantity						0.000 kilogram		
	Net Total Quantity						77.755 kilogram		
	Say 77.755 kilogram @ Rs 81.57 / kilogram							Rs 6342.48	
12	50.10.1 Steel work in built up G I tubular (round, square or rectangular hollow tubes etc.) trusses etc., including cutting, hoisting, fixing in position and applying a priming coat of approved steel primer, including welding and bolted with special shaped washers etc. complete								
	Wall plate truss	11	28.900	0.200		20.0	115.601		
	Common rafter truss	11	3.000	0.200		20.0	96.001		
	Ridge truss	1	9.550	0.200		20.0	38.200		
	Total Quantity						249.802 kg		
	Total Deducted Quantity						0.000 kg		
	Net Total Quantity						249.802 kg		
	Say 249.802 kg @ -Rs 144.34 / kg							Rs 36056.42	
13	50.10.2 Steel work for purlin/single section with G I pipes including cutting, hoisting, fixing in position and applying a priming coat of approved steel primer, including welding and bolted with special shaped washers etc. complete								
	65 mm GI pipe	8	3.700			6.54	193.584		
	40mm GI pipe for Purlin	8	10.650			3.6	306.720		
	Coilar-Rectangular GI Tube 50mmx25mmx1.6mm	4	1.500			2.71	18.260		
	Total Quantity						516.564 kg		
	Total Deducted Quantity						0.000 kg		
	Net Total Quantity						516.564 kg		
	Say 516.564 kg @ Rs 117.53 / kg							Rs 60711.77	
14	12.50 Providing and fixing pre-coated galvanised iron profile sheets (size, shape and pitch of corrugation as approved by Engineer-in-charge) 0.50 mm (+0.05%), total coated thickness with zinc coating 120 grams per sqm as per IS: 277, in 240 mpa steel grade, 5-7 microns epoxy primer on both side of the sheet and polyester top coat 15-18 microns. Sheet should have protective guard film of 25 microns minimum to avoid scratches during transportation and should be supplied in single length upto 12 metre or as desired								

PRICE

EST NO:2017-2018/

	by Engineer-in-charge. The sheet shall be fixed using self drilling/self tapping screws of size (5.5x55mm) with EPDM seal, complete upto any pitch in horizontal/ vertical or curved surfaces, excluding the cost of purlins, rafters and trusses and including cutting to size and shape wherever required.						
	Roof						
	Roof	1	10.750	6.500		1.2	03.850
		Total Quantity					83.850 sqm
		Total Deducted Quantity					0.000 sqm
		Net Total Quantity					83.850 sqm
		Say 83.850 sqm @ Rs 793.24 / sqm					Rs 66513.17
15	12.51.1	Providing and fixing pre-coated galvanised steel sheet roofing accessories 0.50 mm (+ 0.05%) total coated thickness, zinc coating 120 grams per sqm as per IS: mm(+0.05%) total coated thickness, Zinc coating 120 grams per sqm as per IS: 277, in 240 mpa steel grade, 5-7 microns epoxy primer on both side of the sheet and polyester top coat 15-18 microns using self drilling/self tapping screws complete: Ridges plain (500-600/mm)					
	Ridge	1	10.750				10.750
		Total Quantity					10.750 metre
		Total Deducted Quantity					0.000 metre
		Net Total Quantity					10.750 metre
		Say 10.750 metre @ Rs 519.48 / metre					Rs 5584.41
16	13.1.1	12 mm cement plaster of mix:1:4 (1 cement : 4 fine sand)					
	wall						
	Wall-inside	1	17.340	1.200			20.808
	Outside	1	18.140	1.200			21.768
		1	15.600	2.700			42.121
	Office	1	8.200	2.700			22.140
	Dress	1	7.200	2.700			19.440
	Toilet	1	5.400	1.200			6.480
	Wall near main door	2*2	0.600	1.500			3.600
	Half wall top	1	15.540	0.200			3.108
	Opening						
	Door	1	1.000	1.000	2.100		-2.100
	Doors	2	0.900	1.000	2.100		-3.780
	Door	1	0.750	1.000	2.100		-1.575

PRICE

EST NO:2017-2018/

	Windows	2	1.000	1.000	1.200		-2.400		
		Total Quantity					139.465 sqm		
		Total Deducted Quantity					-9.855 sqm		
		Net Total Quantity					129.610 sqm		
		Say 129.610 sqm @ Rs 249.26 / sqm						Rs 32306.59	
17	11.36	<p>Providing and fixing 1st quality ceramic glazed wall tiles conforming to IS : 15622 (thickness to be specified by the manufacturer), of approved make, in all colours, shades except burgundy, bottle green, black of any size as approved by Engineer-in-Charge, in skirting, risers of steps and dados, over 12 mm thick bed of cement mortar 1:3 (1 cement : 3 coarse sand) and jointing with grey cement-slurry @ 3.3 kg per sqm, including pointing in white cement mixed with pigment of matching shade complete.</p>							
	Wall tile-Toilet	4.850	1.500				6.976		
		Total Quantity					6.976 sqm		
		Total Deducted Quantity					0.000 sqm		
		Net Total Quantity					6.976 sqm		
		Say 6.976 sqm @ Rs 1073.41 / sqm						Rs 7488.11	
18	11.37	<p>Providing and laying Ceramic glazed floor tiles of size 300x300 mm (thickness to be specified by the manufacturer), of 1st quality conforming to IS : 15622, of approved make, in colours such as White, Ivory, Grey, Fume Red Brown, laid on 20 mm thick cement mortar 1:4 (1 Cement : 4 Coarse sand), including pointing the joints with white cement and matching pigment etc., complete.</p>							
	Toilet	1	1.500	1.200			1.800		
		Total Quantity					1.800 sqm		
		Total Deducted Quantity					0.000 sqm		
		Net Total Quantity					1.800 sqm		
		Say 1.800 sqm @ Rs 992.05 / sqm						Rs 1785.69	
19	11.41.2	<p>Providing and laying vitrified floor tiles in different sizes (thickness to be specified by the manufacturer) with water absorption less than 0.08% and conforming to IS : 15622, of approved make, in all colours and shades, laid on 20 mm thick cement mortar 1:4(1 cement : 4 coarse sand), including grouting the joints with white cement and matching pigments etc., complete. Size of Tile 600 x 600 mm.</p>							
		Floor							
	Dress	1	2.100	1.500			3.151		
	Office	1	2.100	2.000			4.200		
		Total Quantity					7.351 sqm		
		Total Deducted Quantity					0.000 sqm		
		Net Total Quantity					7.351 sqm		

PRICE

EST NO:2017-2018/

		Say 7.351 sqm @ Rs 1613.28 / sqm					Rs 11859.22	
20	13.9.1 Cement plaster 1:3 (1 cement : 3 coarse sand) finished with a floating coat of neat cement.12 mm cement plaster							
	Common Area	1	6.220	4.900			30.478	
	Total Quantity						30.478 sqm	
	Total Deducted Quantity						0.000 sqm	
	Net Total Quantity						30.478 sqm	
	Say 30.478 sqm @ Rs 338.25 / sqm					Rs 10309.18		
21	50.9.1.1 Providing wood work in frames of doors, windows, clerestory windows and other frames, wrought framed and fixed in position with hold fast lugs or with dash fasteners of required dia & length (hold fast lugs or dash fastener shall be paid for separately), using good quality Anjili wood /jack wood							
	Main door vertical	2	2.100	0.100	0.075		0.032	
	Main door -Horizontal	2	1.200	0.100	0.075		0.018	
	Internal door-Vertical	2	2.100	0.100	0.075		0.063	
	Horizontal	2	1.100	0.100	0.075		0.017	
	Window vertical	2	1.200	0.100	0.075		0.054	
	Horizontal	2	1.200	0.100	0.075		0.035	
	Ventilator vertical	2	0.500	0.100	0.075		0.008	
	Horizontal	2	0.800	0.100	0.075		0.013	
	Total Quantity						0.241 cum	
	Total Deducted Quantity						0.000 cum	
	Net Total Quantity						0.241 cum	
	Say 0.241 cum @ Rs 102654.38 / cum					Rs 24739.71		
22	50.9.2.1 Providing and fixing paneled and glazed shutters for doors, windows and clerestory windows, 35 mm thick shutters including ISI marked M.S. pressed butt hinges bright finished of required size with necessary screws, excluding panelling which will be paid for separately, all complete as per direction of Engineerin - charge.using Anjili/ Jack wood							
	Main door	1	0.850	1.950			1.658	
	D2	2	0.750	1.950			2.925	
	Windows	2*2	0.390	1.050			1.639	
	Total Quantity						6.222 sqm	
	Total Deducted Quantity						0.000 sqm	
	Net Total Quantity						6.222 sqm	

PRICE

EST NO:2017-2018/

		Say 6.222 sqm @ Rs 2919.53 / sqm				Rs 18165.32	
23	50.9.4.1 Providing and fixing paneling or paneling and glazing in paneled or paneled and glazed shutters for doors, windows and clerestory windows (Area of opening for panel inserts excluding portion inside grooves or rebates to be measured) paneling for paneled or paneled and glazed shutters 25 mm to 40 mm thick using good quality Anjili/ Jack wood						
	Main door	1	0.850	1.950		1.658	
	D2	2	0.750	1.950		2.925	
		Total Quantity				4.583 sqm	
		Total Deducted Quantity				0.000 sqm	
		Net Total Quantity				4.583 sqm	
		Say 4.583 sqm @ Rs 2443.12 / sqm				Rs 11196.82	
24	50.9.5.2 Providing and fixing glazed shutters for doors, windows and clerestory windows using 4 mm thick float glass panes including ISI marked M.S. pressed butt hinges bright finished of required size with necessary screws. Using Pincoda wood 35 mm thick shutters						
		2*2	0.390	1.050		1.639	
		Total Quantity				1.639 sqm	
		Total Deducted Quantity				0.000 sqm	
		Net Total Quantity				1.639 sqm	
		Say 1.639 sqm @ Rs 3834.06 / sqm				Rs 6284.02	
25	9.117.1 Providing and fixing factory made uPVC door frame made of uPVC extruded sections having an overall dimension as below (tolerance ± 1 mm), with wall thickness 2.0mm (± 0.2 mm), corners of the door frame to be jointed with galvanized brackets and stainless steel screws, joints mitred and plastic welded. The hinge side vertical of the frames reinforced by galvanized M.S. tube of size 19 x 19 mm and 1 mm (± 0.1 mm) wall thickness and 3 nos. stainless steel hinges fixed to the frame complete as per manufacturer's specification and direction of Engineer-in-charge						
	D3	1	5.000			5.000	
		Total Quantity				5.000 metre	
		Total Deducted Quantity				0.000 metre	
		Net Total Quantity				5.000 metre	
		Say 5.000 metre @ Rs 312.45 / metre				Rs 1562.25	
26	9.118.1 Providing and fixing to existing door frames 24 mm thick factory made PVC door shutters made of styles and rails of a uPVC hollow section of size 59x24 mm and wall thickness 2 mm (± 0.2 mm) with inbuilt edging on both sides. The styles and rails mitred and joint at the corners by means of M.S. galvanised/plastic brackets of size 75x220 mm having wall thickness 1.0 mm and stainless steel screws.						

PRICE

EST NO:2017-2018/

	The styles of the shutter reinforced by inserting galvanised M.S. tube of size 20x20 mm and 1 mm (\pm 0.1 mm) wall thickness. The lock rail made up of 'H' section, a uPVC hollow section of size 100x24 mm and 2 mm (\pm 0.2 mm) wall thickness, fixed to the shutter styles by means of plastic/galvanised M.S. 'U' cleats. The shutter frame filled with a uPVC multi-chambered single panel of size not less than 620 mm, having over all thickness of 20 mm and 1 mm (\pm 0.1 mm) wall thickness. The panels filled vertically and tie bar at two places by inserting horizontally 6 mm galvanised M.S. rod and fastened with nuts and washers, complete as per manufacturer's specification and direction of Engineer-in-charge(For W.C. and bathroom door shutter).						
	D3	1	0.750	2.100		1.576	
	Total Quantity						1.576 sqm
	Total Deducted Quantity						0.000 sqm
	Net Total Quantity						1.576 sqm
	Say 1.576 sqm @ Rs 2594.88 / sqm						Rs 4089.53
27	9.48.2	Providing and fixing M.S. Grills of required pattern in frames of windows etc. with M.S. flats, square or round bars etc. Including priming coat with approved steel primer all complete. Fixed to openings/ wooden frames with rawl plugs screws etc					
		2	1,000	1,200		12.0	28.800
	Total Quantity						28.800 kg
	Total Deducted Quantity						0.000 kg
	Net Total Quantity						28.800 kg
	Say 28.800 kg @ Rs 162.00 / kg						Rs 4667.33
28	10.25.2	Item Shifted to head 14 as item 14.74 Steel work welded in built up sections/framed work, Including cutting, hoisting, fixing in position and applying a priming coat of approved steel primer using structural steel etc. as required. In grallings, frames, guard bar, ladder, railings, brackets, gates and similar works					
	Grill work	1	15.140		1.500	10.0	227.101
	Total Quantity						227.101 kg
	Total Deducted Quantity						0.000 kg
	Net Total Quantity						227.101 kg
	Say 227.101 kg @ Rs 123.87 / kg						Rs 28131.00
29	21.1.1.3	Providing and fixing aluminium work for doors, windows, ventilators and partitions with extruded built up standard tubular sections/ appropriate Z sections and other sections of approved make conforming to IS : 733 and IS: 1285, fixing with dash fasteners of required dia and size, including necessary filling up the gaps at junctions, i.e. at top, bottom and sides with required EPDM rubber/ neoprene gasket etc. Aluminium sections shall be smooth, rust free, straight, mitred and jointed mechanically wherever required including cleat angle, Aluminium snap beading for glazing /paneling, C.P. brass/ stainless steel screws, all complete as per architectural drawings and the directions of Engineer-in-charge.(Glazing,					

PRICE

EST NO:2017-2018/

	paneling and dash fasteners to be paid for separately):For fixed portion Polyester powder coated aluminium (minimum thickness of polyester powder coating 50 micron)						
	For compartment	1	2.000	2.100		4.0	16.800
		2	1.450	2.100		4.0	24.360
	Total Quantity						41.160 kg
	Total Deducted Quantity						0.000 kg
	Net Total Quantity						41.160 kg
	Say 41.160 kg @ Rs 564.66 / kg						Rs 23241.41
30	21.2.2 Providing and fixing 12 mm thick pre-laminated particle board flat pressed three layer or graded wood particle board conforming to IS : 12823 Grade 1 Type II, in panelling fixed in aluminum doors, windows shutters and partition frames with Cr. brass / stainless steel screws etc. complete as per architectural drawings and directions of Engineer - in - Charge. Pre-laminated particle board with decorative lamination on both sides						
		1	2.000		1.000		2.000
			1.450		1.000		2.900
	Total Quantity						4.900 sqm
	Total Deducted Quantity						0.000 sqm
	Net Total Quantity						4.900 sqm
	Say 4.900 sqm @ Rs 1248.94 / sqm						Rs 6119.81
31	21.3.1 Providing and fixing glazing in aluminium door, window, ventilator shutters and partitions etc. with EPDM rubber / neoprene gasket etc. complete as per the architectural drawings and the directions of Engineer - in - Charge. (Cost of aluminium snap beading shall be paid in basic item):With float glass panes of 4.0 mm thickness						
		1	2.000		1.000		2.000
		2	1.450		1.000		2.900
	Total Quantity						4.900 sqm
	Total Deducted Quantity						0.000 sqm
	Net Total Quantity						4.900 sqm
	Say 4.900 sqm @ Rs 1068.65 / sqm						Rs 5236.39
32	13.43.1 Applying one coat of water thinnable cement primer of approved brand and manufacture on wall surface:Water thinnable cement primer						
	wall						
	Wall-Inside	1	17.340	1.200			20.808

PRICE

EST NO:2017-2018

	Outside	1	18.140	1.200			21.768		
		1	15.600	2.700			42.121		
	Office	1	8.200	2.700			22.140		
	Dress	1	7.200	2.700			18.440		
	Toilet	1	5.400	1.200			6.480		
	Wall near main door	2*2	0.600	1.500			3.600		
	Half wall top	1	15.540	0.200			3.108		
	Opening								
	Door	1	1.000	1.000	2.100		-2.100		
	Doors	1	0.900	1.000	2.100		-3.780		
	Door	1	0.750	1.000	2.100		-1.575		
	Windows	2	1.000	1.000	1.200		-2.400		
	Total Quantity						139.465 sqm		
	Total Deducted Quantity						-9.855 sqm		
	Net Total Quantity						129.610 sqm		
	Say 129.610 sqm @ Rs 53.25 / sqm						Rs 6901.73		
33	13.61.1 Painting with synthetic enamel paint of approved brand and manufacture to give an even shade:Two or more coats on new work								
	D1	1	1.000	2.100		2.25	-4.728		
	D2	2	0.900	2.100		2.25	8.505		
	Window	2	1.000	1.200			2.400		
	Grill-window	2	1.000	1.200			2.400		
	Grill for opening	1	15.140	1.500			22.710		
	Truss	1	28.900	0.200			5.780		
		4*2	3.000	0.200			4.801		
	Extra quantity	1	10.000	1.000			10.000		
	Total Quantity						61.322 sqm		
	Total Deducted Quantity						0.000 sqm		
	Net Total Quantity						61.322 sqm		
	Say 61.322 sqm @ Rs 112.99 / sqm						Rs 6928.77		
34	13.82.2 Wall painting with acrylic emulsion paint, having VOC (Volatile Organic Compound) content less than 50 grams/ litre, of approved brand and manufacture Including applying additional coats wherever required, to								

PRICE

EST NO:2017-2018/

achieve even shade and colour.Two coats							
wall							
Wall-inside	1	17.340	1.200				20.808
Outside	1	18.140	1.200				21.768
	1	15.600	2.700				42.121
Office	1	8.200	2.700				22.140
Dress	1	7.200	2.700				19.440
Toilet	1	5.400	1.200				6.480
Wall near main door	1	0.600	1.500				3.600
Half wall top	1	15.540	0.200				3.108
Opening							
Door	1	1.000	1.000	2.100			-2.100
Doors	2	0.900	1.000	2.100			-3.780
Door	1	0.750	1.000	2.100			-1.575
Windows	2	1.000	1.000	1.200			-2.400
Total Quantity							139.465 sqm
Total Deducted Quantity							-9.855 sqm
Net Total Quantity							129.610 sqm
Say 129.610 sqm @ Rs 106.50 / sqm							Rs 13803.47
35	17.2.1 Providing and fixing white vitreous china pedestal type water closet (European type W.C. pan) with seat and lid, 10 litre low level white P.V.C. flushing cistern, including flush pipe, with manually controlled device (handle lever), conforming to IS : 7231, with all fittings and fixtures complete, including cutting and making good the walls and floors wherever required:W.C. pan with ISI marked white solid plastic seat and lid						
	1						1.000
Total Quantity							1.000 each
Total Deducted Quantity							0.000 each
Net Total Quantity							1.000 each
Say 1.000 each @ Rs 4927.03 / each							Rs 4927.03
36	17.7.1 Providing and fixing wash basin with C.I. brackets, 15 mm C.P. brass pillar taps, 32 mm C.P. brass waste of standard pattern, including painting of fittings and brackets, cutting and making good the walls wherever require:White Vitreous China Wash basin size 630x450 mm with a pair of 15 mm C.P. brass pillar taps						

PRICE

EST NO:2017-2018/

		1				1.000	
		Total Quantity				1.000	each
		Total Deducted Quantity				0.000	each
		Net Total Quantity				1.000	each
		Say 1.000 each @ Rs 3312.67 / each				Rs 3312.67	
37	17.28.2.1 Flexible pipe 32 mm dia					1.000	
		Total Quantity				1.000	each
		Total Deducted Quantity				0.000	each
		Net Total Quantity				1.000	each
		Say 1.000 each @ Rs 105.57 / each				Rs 105.57	
38	50.17.1.5 Supplying and fixing CP Health Faucet superior quality (Jagur or equivalent make) including cost of materials and labour charges etc complete as per the direction of site Engineer-in-charge.					1.000	
		Total Quantity				1.000	no
		Total Deducted Quantity				0.000	no
		Net Total Quantity				1.000	no
		Say 1.000 no @ Rs 1280.53 / no				Rs 1280.53	
39	50.18.7.2.1 Providing and fixing PVC pipes, fittings including fixing the pipe with claps at 1.00 metre spacing. This includes jointing of pipes & fittings with one step PVC solvent cement and testing of joints complete as per direction of Engineer-in-Charge 20 mm dia 12Kg/cm ² - Internal work - Exposed on wall	1	25.000			25.000	
		Total Quantity				25.000	metre
		Total Deducted Quantity				0.000	metre
		Net Total Quantity				25.000	metre
		Say 25.000 metre @ Rs 195.92 / metre				Rs 4898.00	
40	50.18.8.2.2 Providing and fixing PVC pipes, fittings including fixing the pipe with clamps at 1.00 m spacing. This includes jointing of pipes & fittings with one step PVC solvent cement and testing of joints complete as per direction of Engineer-in-Charge. Concealed work, including cutting chases and making good the wall etc. 20 mm pipe 10 Kg/cm ²	1	5.000			5.000	
		Total Quantity				5.000	metre

PRICE

EST NO:2017-2018

		Total Deducted Quantity		0.000 metre	
		Net Total Quantity		5.000 metre	
		Say 5.000 metre @ Rs 297.58 / metre		Rs 1487.90	
41	50.18.9.9.1 Providing and fixing PVC pipes including jointing of pipes with one step PVC solvent cement, trenching, refilling & testing of Joints complete as per direction of engineer in charge. 110 mm dia 6Kg/cm2				
	1*10				10.000
			Total Quantity		10.000 metre
			Total Deducted Quantity		0.000 metre
			Net Total Quantity		10.000 metre
			Say 10.000 metre @ Rs 445.80 / metre		Rs 4458.00
42	50.18.9.22.1 Providing and fixing PVC moulded fittings/ accessories for Rigid PVC pipes, including jointing with PVC solvent cement - 110 mm dia Elbow				
					1.000
			Total Quantity		1.000 no
			Total Deducted Quantity		0.000 no
			Net Total Quantity		1.000 no
			Say 1.000 no @ Rs 104.18 / no		Rs 104.18
43	50.18.9.22.2 Providing and fixing PVC moulded fittings / accessories for Rigid PVC pipes, including jointing with PVC solvent cement - 110 mm dia 45 degree Elbow				
	1				1.000
			Total Quantity		1.000 no
			Total Deducted Quantity		0.000 no
			Net Total Quantity		1.000 no
			Say 1.000 no @ Rs 101.89 / no		Rs 101.89
44	50.18.9.22.3 Providing and fixing PVC moulded fittings/ accessories for Rigid PVC pipes, including jointing with PVC solvent cement-110 mm dia Door Elbow				
	1				1.000
			Total Quantity		1.000 no
			Total Deducted Quantity		0.000 no
			Net Total Quantity		1.000 no
			Say 1.000 no @ Rs 128.58 / no		Rs 128.58

PRICE

EST NO:2017-2018/

45	50.18.9.22.5 Providing and fixing PVC moulded fittings/ accessories for Rigid PVC pipes including jointing with PVC solvent cement 110x110x110 mm dia Tee						1.000	
		1						
							Total Quantity	1.000 no
							Total Deducted Quantity	0.000 no
							Net Total Quantity	1.000 no
							Say 1.000 no @ Rs 171.18 / no	Rs 171.18
46	50.18.9.22.8 Providing and fixing PVC moulded fittings/ accessories for Rigid PVC pipes, including jointing with PVC solvent cement -110 mm dia Vent cowl						1.000	
							Total Quantity	1.000 no
							Total Deducted Quantity	0.000 no
							Net Total Quantity	1.000 no
							Say 1.000 no @ Rs 120.42 / no	Rs 120.42
47	17.32.4 Providing and fixing mirror of superior glass (of approved quality) and of required shape and size with plastic moulded frame of approved make and shade with 6 mm thick hard board backing :Rectangular shape 1500x450 mm						1.000	
		1						
							Total Quantity	1.000 each
							Total Deducted Quantity	0.000 each
							Net Total Quantity	1.000 each
							Say 1.000 each @ Rs 1906.85 / each	Rs 1906.85
48	17.73.2 Providing and fixing PTMT towel rail complete with brackets fixed to wooden cleats with CP brass screws with concealed fitting arrangement of approved quality and colour 600 mm long towel rail with total length of 645 mm, width 78 mm and effective height of 88 mm, weighting not less than 190 gms						1.000	
		1						
							Total Quantity	1.000 no
							Total Deducted Quantity	0.000 no
							Net Total Quantity	1.000 no
							Say 1.000 no @ Rs 609.20 / no	Rs 609.20
49	18.49.1 Providing and fixing C.P brass b/b cock of approved quality conforming to IS: 8931, 15 mm nominal bore							

PRICE

EST NO:2017-2018/

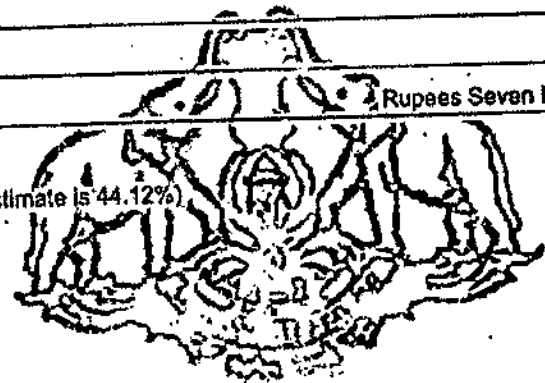
		4					4.000	
		Total Quantity					4.000	each
		Total Deducted Quantity					0.000	each
		Net Total Quantity					4.000	each
		Say 4.000 each @ Rs 535.69 / each					Rs 2142.76	
50	18.52.1	Providing and fixing C.P brass stop cock (concealed) of standard design and of approved make conforming to IS: 893115 mm nominal bore.						
							2.000	
		Total Quantity					2.000	each
		Total Deducted Quantity					0.000	each
		Net Total Quantity					2.000	each
		Say 2.000 each @ Rs 786.82 / each					Rs 1573.64	
51	51.19.ST1	Supplying and installing ready made PVC Septic tank including the cost of carriage, trenching, placing at the level below ground level as specified as per the direction of engineer in charge (Provision for CC/RCC/Sand/06mm aggregate for the preparation of bed shall be paid separately) 1. Below 15 flush capacity						
							1.000	
		Total Quantity					1.000	each
		Total Deducted Quantity					0.000	each
		Net Total Quantity					1.000	each
		Say 1.000 each @ Rs 17077.15 / each					Rs 17077.15	
52	18.48A	Providing and fixing rectangular high density polyethylene water storage loft tank with cover, conforming to ISI : 12701, colour of opaque white or as approved by Engineer-in-charge. The rate includes making necessary holes for inlet, outlet & over flow pipes. The base support l/c fittings & fixtures for tank shall be paid separately.						
		1	500.000				500.000	
		Total Quantity					500.000	Litre
		Total Deducted Quantity					0.000	Litre
		Net Total Quantity					500.000	Litre
		Say 500.000 Litre @ Rs 10.45 / Litre					Rs 5225.00	
						Service Tax Amount	Rs 41425.68493680001	
						Total with Service Tax	Rs 731853.77	
SI No	Description	No	L	B	D	CF	Quantity	Remark

PRICE

EST NO:2017-2018/

2 Provision for Electrification							
Lump-Sum Total						Rs 35000.00	
	SI No	Description	No	L	B	D	CF Quantity
Remark	3 Unforeseen Items if any						
Lump-Sum Total						Rs 8146.00	
						TOTAL Rs 775000.00	
						Rounded Total Rs 7,75,000	
Rupees Seven Lakh Seventy Five Thousand Only							

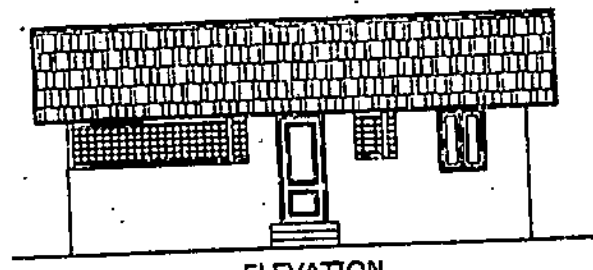
(Cost index Applied for this estimate is 44.12%)



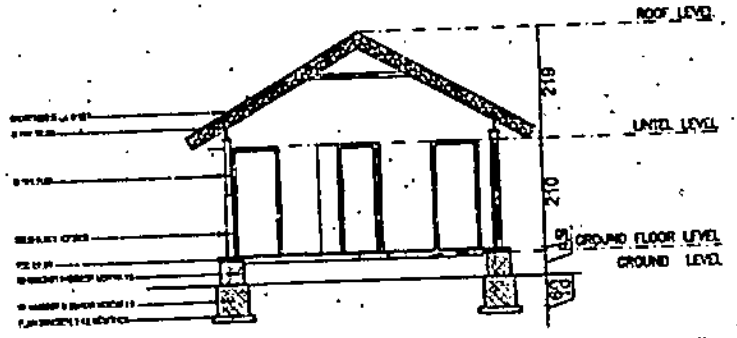
LSGD Engineering Wing

PRICE

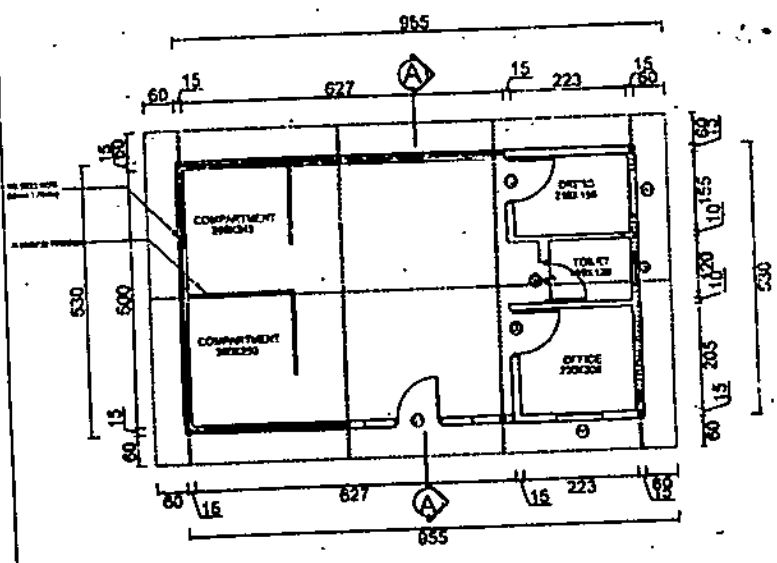
242730/2018/LSGD(OS)



ELEVATION



SECTION A-A



GROUND FLOOR PLAN

SCHEDULE OF JOINERY		
SYMBOL	SIZE	Nos
D1	100 X 210	1No
D2	90 X 210	2Nos
D3	75 X 210	1No
W2	90 X 120	2Nos
V	60 X 120	1No
PLINTH AREA:		
47.43 SQ.M		
MATERIAL RECOVERY FACILITY		